

# COMAR

Optics for the real world

## 10 RQ 03

Right-angle prisms

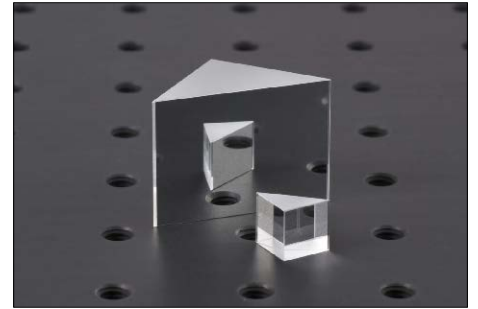


Photo representative of the Right-angle prisms range, and may not show the part 10 RQ 03.

### 10 RQ 03 specification

Entry face size(mm)	10 x 10
Exit face size (mm)	
Coating type	External reflection - The External reflection range have protected aluminium on the hypotenuse for use as mirrors.
Quality	Standard
Inverting/dispersing	
Material	BK7
Angle tolerance (polished faces)	±5min.
Flatness (over inscribed ellipse)	1 lambda
Dimensional tolerance (mm)	±0.2mm
Scratch-dig	40-20
Application	visible and IR
nd	
Vd	