

COMAR

Optics for the real world

10 YU 16

Quality planoconvex cylindrical lenses

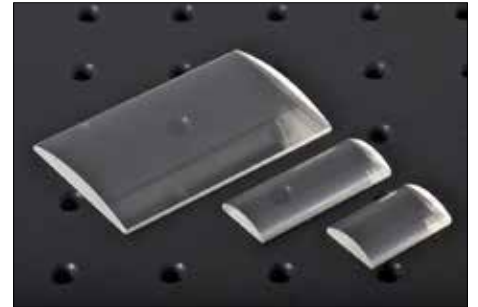
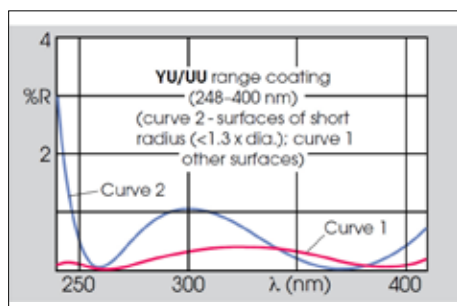


Photo representative of the Quality planoconvex cylindrical lenses range, and may not show the part 10 YU 16.

10 YU 16 specification

Dimensions (mm)	16 x 6.3
Dimensional tolerance (mm)	+0,-0.25 mm
Rod diameter (mm) +/- 10%	n/a
Rod length (mm)	n/a
Focal length (mm)	10
Focal length tolerance (at 587nm)	±2.5%
Back focal length (mm)	8.1
Aperture (mm)	-
Centre thickness (mm)	2.8
Thickness (thinnest point)	1.5 mm
Spread angle from a 1mm beam	n/a
Scratch-dig	60-40
Centration	0.25mm
Wedge (along axis)	4mrad
Form	Rectangular
Glass type/material	UV-silica
Coating type	AR coated 248-400nm
Mounted/unmounted	Unmounted
Mounting part used	n/a



Two typical curves are shown for each coating. Curve 2 applies only to convex surfaces of short radius (R greater than 1.33 x dia.) and Curve 1 to all other surfaces.