

# COMAR

Optics for the real world

## 100 YS 40

Quality planoconvex cylindrical lenses

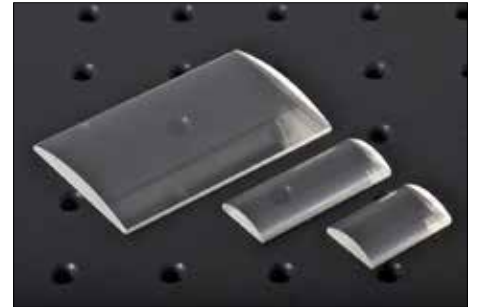


Photo representative of the Quality planoconvex cylindrical lenses range, and may not show the part 100 YS 40.

### 100 YS 40 specification

|                                   |             |
|-----------------------------------|-------------|
| Dimensions (mm)                   | 17 x 6.3    |
| Dimensional tolerance (mm)        | +0,-0.25 mm |
| Rod diameter (mm) +/- 10%         | n/a         |
| Rod length (mm)                   | n/a         |
| Focal length (mm)                 | 100         |
| Focal length tolerance (at 587nm) | ±2.5%       |
| Back focal length (mm)            | 97.8        |
| Aperture (mm)                     | -           |
| Centre thickness (mm)             | 3.2         |
| Thickness (thinnest point)        | 1.5 mm      |
| Spread angle from a 1mm beam      | n/a         |
| Scratch-dig                       | 60-40       |
| Centration                        | 5mrad       |
| Wedge (along axis)                | 4mrad       |
| Form                              | Rectangular |
| Glass type/material               | UV-silica   |
| Coating type                      | Uncoated    |
| Mounted/unmounted                 | Unmounted   |
| Mounting part used                | n/a         |

Image not available.

Two typical curves are shown for each coating. Curve 2 applies only to convex surfaces of short radius (R greater than 1.33 x dia.) and Curve 1 to all other surfaces.