

# COMAR

Optics for the real world

## 16 YQ 25

Quality planoconvex cylindrical lenses

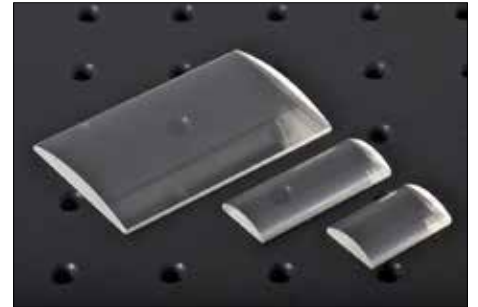


Photo representative of the Quality planoconvex cylindrical lenses range, and may not show the part 16 YQ 25.

### 16 YQ 25 specification

Dimensions (mm)	25 x 10
Dimensional tolerance (mm)	+0,-0.25 mm
Rod diameter (mm) +/- 10%	n/a
Rod length (mm)	n/a
Focal length (mm)	16
Focal length tolerance (at 587nm)	±2.5%
Back focal length (mm)	13.9
Aperture (mm)	-
Centre thickness (mm)	3.2
Thickness (thinnest point)	1.5 mm
Spread angle from a 1mm beam	n/a
Scratch-dig	60-40
Centration	0.25mm
Wedge (along axis)	4mrad
Form	Rectangular
Glass type/material	B270 crown
Coating type	Uncoated
Mounted/unmounted	Unmounted
Mounting part used	n/a

Image not available.

Two typical curves are shown for each coating. Curve 2 applies only to convex surfaces of short radius (R greater than 1.33 x dia.) and Curve 1 to all other surfaces.