

# COMAR

Optics for the real world

## 160 YB 63

Quality planoconvex cylindrical lenses

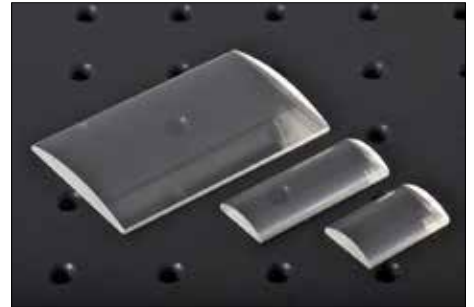
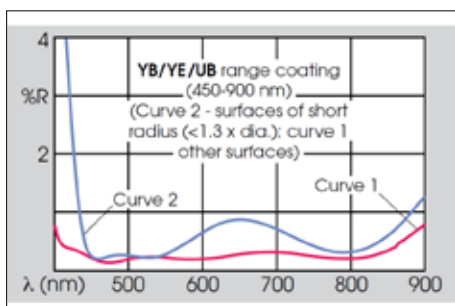


Photo representative of the Quality planoconvex cylindrical lenses range, and may not show the part 160 YB 63.

### 160 YB 63 specification

Dimensions (mm)	63 x 40
Dimensional tolerance (mm)	+0,-0.25 mm
Rod diameter (mm) +/- 10%	n/a
Rod length (mm)	n/a
Focal length (mm)	160
Focal length tolerance (at 587nm)	±2.5%
Back focal length (mm)	157.4
Aperture (mm)	-
Centre thickness (mm)	4
Thickness (thinnest point)	1.5 mm
Spread angle from a 1mm beam	n/a
Scratch-dig	60-40
Centration	5mrad
Wedge (along axis)	4mrad
Form	Rectangular
Glass type/material	B270 crown
Coating type	AR coated 450-900nm
Mounted/unmounted	Unmounted
Mounting part used	n/a



Two typical curves are shown for each coating. Curve 2 applies only to convex surfaces of short radius (R greater than 1.33 x dia.) and Curve 1 to all other surfaces.