

COMAR

Optics for the real world

2000 IO 25

Crown glass meniscus lenses

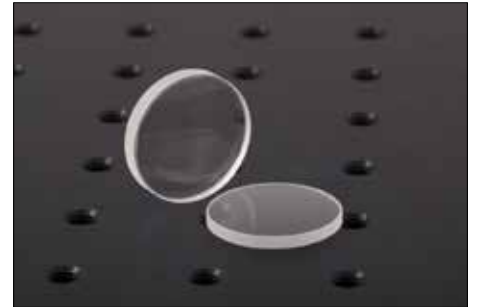


Photo representative of the Crown glass meniscus lenses range, and may not show the part 2000 IO 25.

2000 IO 25 specification

| | |
|-----------------------------------|-------------|
| Diameter (mm) | 25 |
| Diameter tolerance (mm) | +0, -0.25mm |
| Focal length (mm) | 2019 |
| Focal length tolerance (at 587nm) | n/a |
| Back focal length (mm) | 2000 |
| Centre thickness (mm) | n/a |
| Centre thickness tolerance | n/a |
| Edge thickness (mm) | n/a |
| Centration | n/a |
| Form | meniscus |
| Scratch-dig | 60-40 |
| Coating type | Uncoated |
| Glass type | B270 |
| Diffraction-limited aperture (mm) | n/a |
| Radii (mm) | n/a |
| Back vertex power (diopter) | 0.5 |
| Back vertex power tolerance | $\pm 0.06D$ |
| Figure (sphericity) | n/a |

Image not available.

Two typical curves are shown for each coating. Curve 2 applies only to convex surfaces of short radius (R greater than 1.33 x dia.) and Curve 1 to all other surfaces.