

COMAR

Optics for the real world

40 MD 00

Elliptical mirror

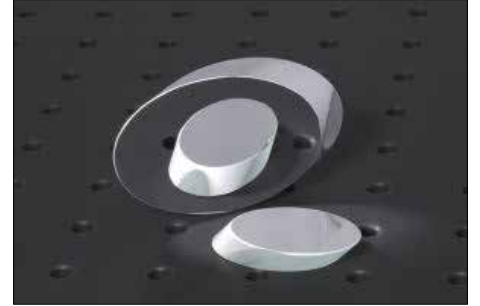


Photo representative of the Elliptical mirror range, and may not show the part 40 MD 00.

40 MD 00 specification

Diameter (mm)	n/a
Diameter tolerance (mm)	+0/-0.25
Length x width (mm)	n/a
Dimensional tolerance (mm)	n/a
Thickness (mm)	10
Thickness tolerance (mm)	±0.15
Flatness	lambda/4
Scratch-dig	40-20
Coating	Protected Al - Al/SiOx (visible reflectance 85-90%)
Wavelength range (nm)	
Diameter (minor axis) (mm)	40 (+0/-0.25) mm
Major axis (mm)	57
Focal length (mm) (+/- 1mm)	n/a
Radius of curvature (mm)	n/a
Source to rim plane clearance (mm)	n/a

