

COMAR

Optics for the real world

40 YQ 40

Quality planoconvex cylindrical lenses

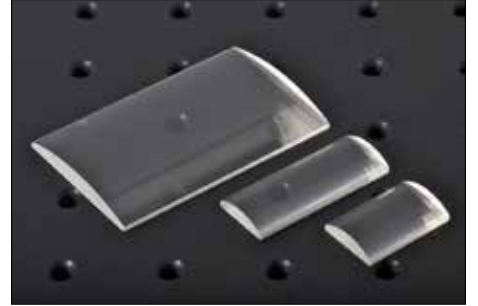


Photo representative of the Quality planoconvex cylindrical lenses range, and may not show the part 40 YQ 40.

40 YQ 40 specification

Dimensions (mm)	40 x 25
Dimensional tolerance (mm)	+0,-0.25 mm
Rod diameter (mm) +/- 10%	n/a
Rod length (mm)	n/a
Focal length (mm)	40
Focal length tolerance (at 587nm)	±2.5%
Back focal length (mm)	36.3
Aperture (mm)	-
Centre thickness (mm)	5.7
Thickness (thinnest point)	1.5 mm
Spread angle from a 1mm beam	n/a
Scratch-dig	60-40
Centration	0.25mm
Wedge (along axis)	4mrad
Form	Rectangular
Glass type/material	B270 crown
Coating type	Uncoated
Mounted/unmounted	Unmounted
Mounting part used	n/a

Image not available.

Two typical curves are shown for each coating. Curve 2 applies only to convex surfaces of short radius (R greater than 1.33 x dia.) and Curve 1 to all other surfaces.