

COMAR

Optics for the real world

400 IO 25

Crown glass meniscus lenses

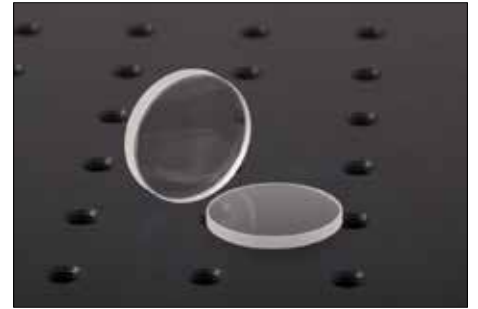


Photo representative of the Crown glass meniscus lenses range, and may not show the part 400 IO 25.

400 IO 25 specification

Diameter (mm)	25
Diameter tolerance (mm)	+0, -0.25mm
Focal length (mm)	407
Focal length tolerance (at 587nm)	n/a
Back focal length (mm)	400
Centre thickness (mm)	n/a
Centre thickness tolerance	n/a
Edge thickness (mm)	n/a
Centration	n/a
Form	meniscus
Scratch-dig	60-40
Coating type	Uncoated
Glass type	B270
Diffraction-limited aperture (mm)	n/a
Radii (mm)	n/a
Back vertex power (diopter)	2.5
Back vertex power tolerance	$\pm 0.06D$
Figure (sphericity)	n/a

Image not available.

Two typical curves are shown for each coating. Curve 2 applies only to convex surfaces of short radius (R greater than 1.33 x dia.) and Curve 1 to all other surfaces.