

COMAR

Optics for the real world

63 YU 40

Quality planoconvex cylindrical lenses

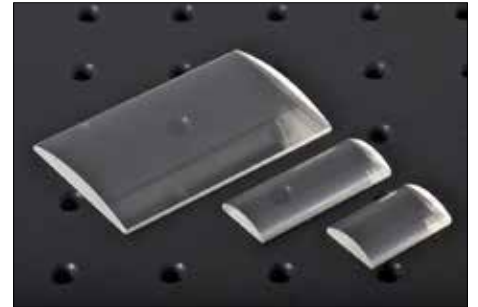
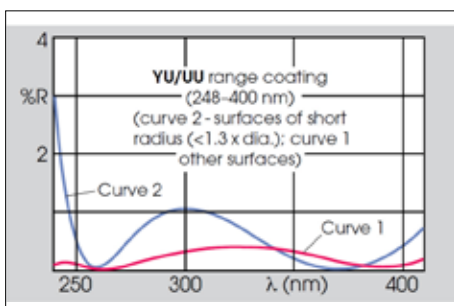


Photo representative of the Quality planoconvex cylindrical lenses range, and may not show the part 63 YU 40.

63 YU 40 specification

| | |
|-----------------------------------|---------------------|
| Dimensions (mm) | 40 x 25 |
| Dimensional tolerance (mm) | +0,-0.25 mm |
| Rod diameter (mm) +/- 10% | n/a |
| Rod length (mm) | n/a |
| Focal length (mm) | 63 |
| Focal length tolerance (at 587nm) | ±2.5% |
| Back focal length (mm) | 60 |
| Aperture (mm) | - |
| Centre thickness (mm) | 4.3 |
| Thickness (thinnest point) | 1.5 mm |
| Spread angle from a 1mm beam | n/a |
| Scratch-dig | 60-40 |
| Centration | 5mrad |
| Wedge (along axis) | 4mrad |
| Form | Rectangular |
| Glass type/material | UV-silica |
| Coating type | AR coated 248-400nm |
| Mounted/unmounted | Unmounted |
| Mounting part used | n/a |



Two typical curves are shown for each coating. Curve 2 applies only to convex surfaces of short radius (R greater than 1.33 x dia.) and Curve 1 to all other surfaces.